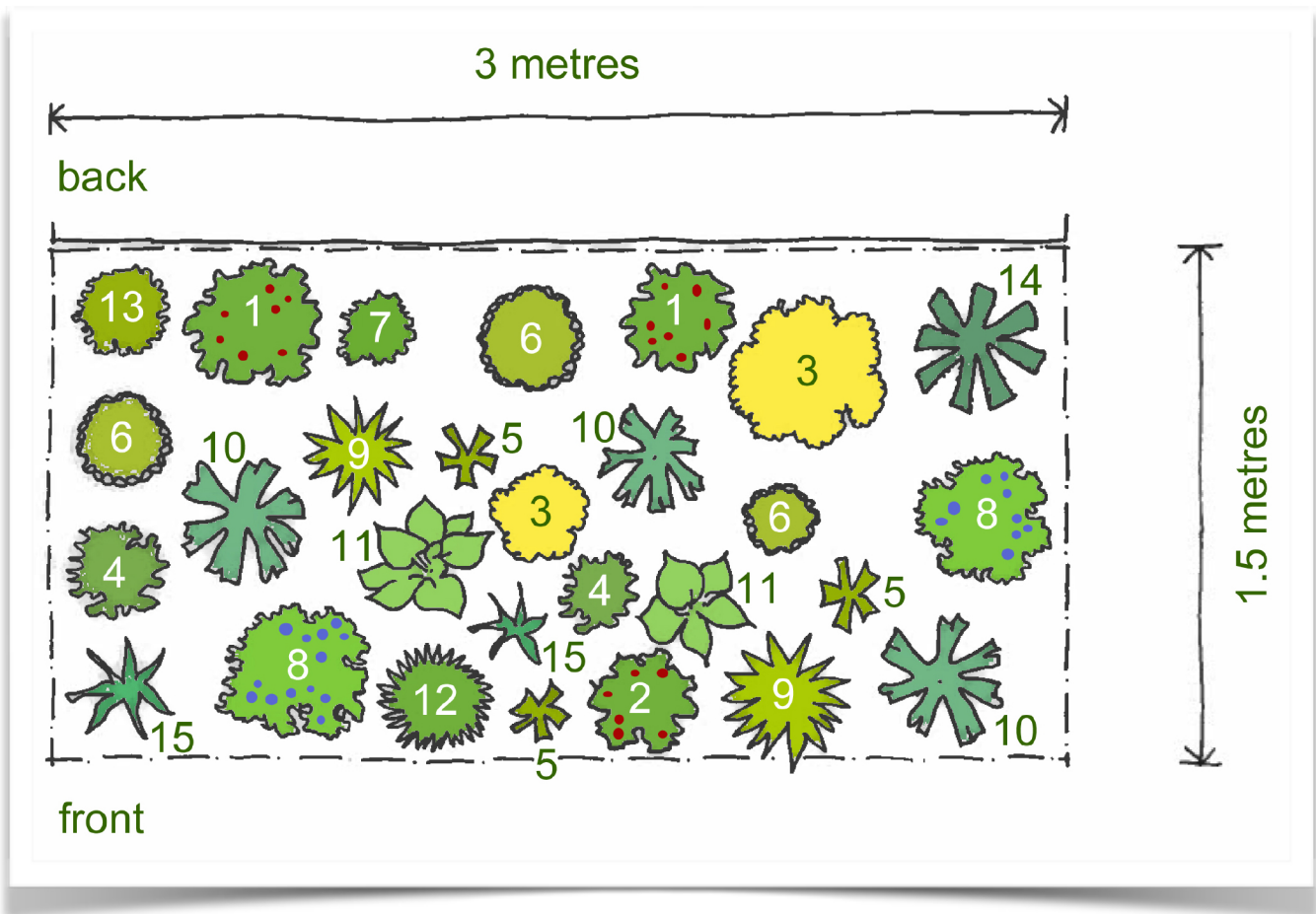


## Rosy's planting plan for a Shady Border



### The Plant Key - with alternatives or suggestions for substitutes

1. *Alstromeria psittiacina* 'Royal Star' x 2 Please note these are best planted in Spring.  
Or try *Gillenia*, *Veronicastrum*
2. *Alstromeria* 'Inca Vito' x 1 or any dwarf *Alstroemeria* Please note these are best planted in Spring.  
Or try *Lamium*
3. *Amsonia illustris* x 2 or *Amsonia ciliata*, *Doronicum x excelsum* 'Harpur Crewe', *Melittis*,
4. *Brunnera* any variety x 2 or *Waldestina*
5. *Digitalis ferruginea* x 3 or any *Campanula takesimana* types
6. *Epimedium x rubrum* x 3 or any *Epimedium* variety, *Uvularia*
7. *GERANIUM phaeum* 'Album' x 1 or any *GERANIUM phaeum*
8. *Geranium* 'Rozanne' x 2 or any *Astrantia major* variety
9. *Hakonechloa* x 2 or any *Tiarella* variety
10. *Helleborus Walberton's*® Rosemary PBR (WALHERO) x 3 or any *Helleborus hybridus*
11. *Hosta* x 2
12. *Liriope muscari* x 1 or any variety of *Corydalis*
13. *Maianthemum paniculatum* x 1 or *Tellima grandiflora*
14. *Polygonatum* variety x 2 or *Ranunculus aconitifolius* or *Eurybia divaricata*
15. *Pulmonaria* any variety x 2 or *Knautia dipsacifolia* or any *Roscoea*

For Mail Order. Our mail order team is very small, so we're unable to advise you on bespoke design, the specific numbers of plants you'll need for borders which are bigger or smaller than the plans detail, or to complete quotes for online purchasing. We can only do this type of work if you visit the nursery.

If you wish to purchase the plants online, use the links in the plans to find the plants.

We may not have all the plants listed on the plans for mail order delivery at any one time. Our nursery shop often has alternatives and substitutes, but we can only advise and provide these if you visit us.