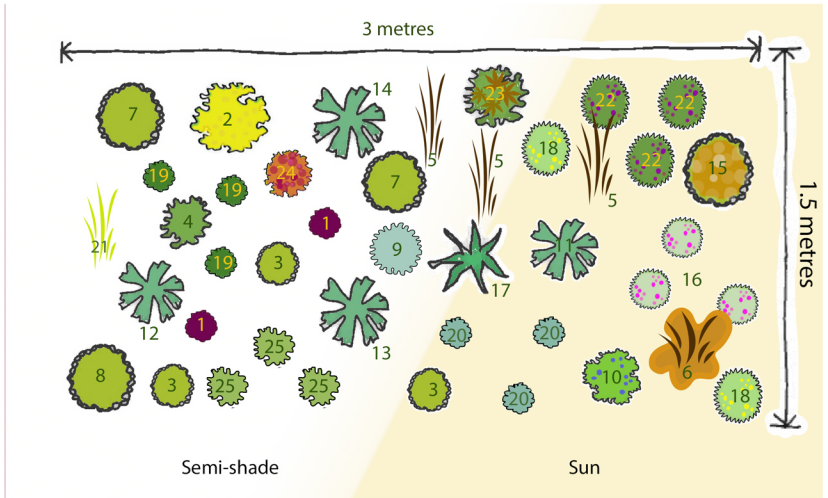


Cottage Garden Border with Winter Interest Layout Example



1. AJUGA reptans 'Catlin's Giant' x 2
2. AMSONIA illustris x 1
3. BERGENIA 'Bressingham White' x 3
4. BRUNNERA macrophylla 'Alexanders Great' PBR x1
5. CAREX buchananii x 3
6. CAREX comans bronze-leaved x1
7. EPIMEDIUM x versicolour 'Sulphureum' x1
8. EPIMEDIUM x warleyense 'Orangekonigin' x1
9. EUPHORBIA characias Black Pearl x 1
10. GLOBULARIA cordifolia x1
11. HELLEBORUS Anna's Red (Frostkiss Series) x 1
12. HELLEBORUS ericsmithii VIV Valeria x 1
13. HELLEBORUS x nigercors 'Emma' PBR x 1
14. HELLEBORUS VIV* Victoria x 1
15. HEUCHERELLA 'Cracked Ice' PBR x 1
16. LYCHNIS coronaria 'Gardeners World' x 3 Syn. Silene coronaria 'Gardeners World
17. PULMONARIA 'Trevi Fountain' x 1
18. SANTOLINA pinnata ssp. neapolitana 'Edward Bowles' x 2
19. SAXIFRAGA umbrosa x 3
20. SAXIFRAGA 'Monarch' x 3
21. SESELARIA autumnalis x 1
22. TEUCRIUM x lucidrys x 3
23. TIARELLA 'Spring Symphony' PBR x 1
24. TELLIMA grandiflora 'Rubra Group' x 1
25. VERONICA gentianoides 'Tissington White' x3

Suggested additional shrubs to provide winter interest but not featured within this plan:

Cornus sanguinea 'Anny's Winter Orange'

Osmanthus delavayi

Sarcococca

Ilex 'Dwarf'