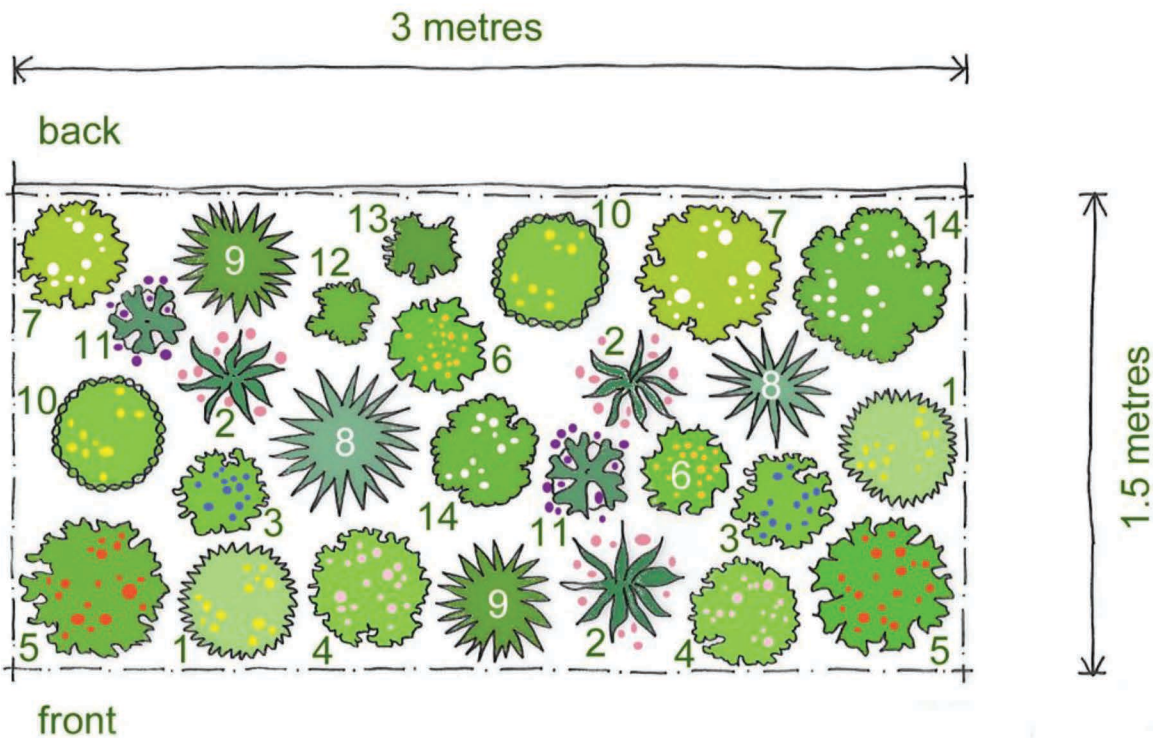


# Rosy Hardy's Plan for a Sunny Border



1. *Cota tinctoria* E. C. Buxton x 2
2. *Oenothera* Rosy Shimmers ('Harshim' PBR) (G) x 3 Please note these are best planted in spring
3. *Geranium* 'Brookside' x 2
4. *Geranium sanguineum* var. *striatum* x 2
5. *Geum* Scarlet Tempest ('Macgeu001'PBR) (Tempest Series) x 2
6. *Geum* 'Totally Tangerine' x 2
7. *Leucanthemum* x 2
8. *Miscanthus sinensis* 'Morning Light' x 2
9. *Molinia caerulea* subsp. *caerulea* 'Heidebraut' x 2  
OR *Molinia caerulea* subsp. *arundinacea* 'Skyracer'
10. *Rudbeckia fulgida* var. *speciosa* x 2
11. *Salvia nemorosa* 'Caradonna' x 2
12. *Symphotrichum* 'Little Carlow' (*\_cordifolium\_* hybrid) x 1
13. *Vernonia* x 1
14. *Veronicastrum virginicum* 'Diane' x 2

For Mail Order: Our mail order team is very small, so we're unable to advise you on bespoke design, the specific numbers of plants you'll need for borders which are bigger or smaller than the plans detail, or to complete quotes for online purchasing. We can only do this type of work if you visit the nursery. If you wish to purchase the plants online, use the links in the plans to find the plants. We may not have all the plants listed on the plans for mail order delivery at any one time. Our nursery shop often has alternatives and substitutes, but we can only advise and provide these if you visit us.