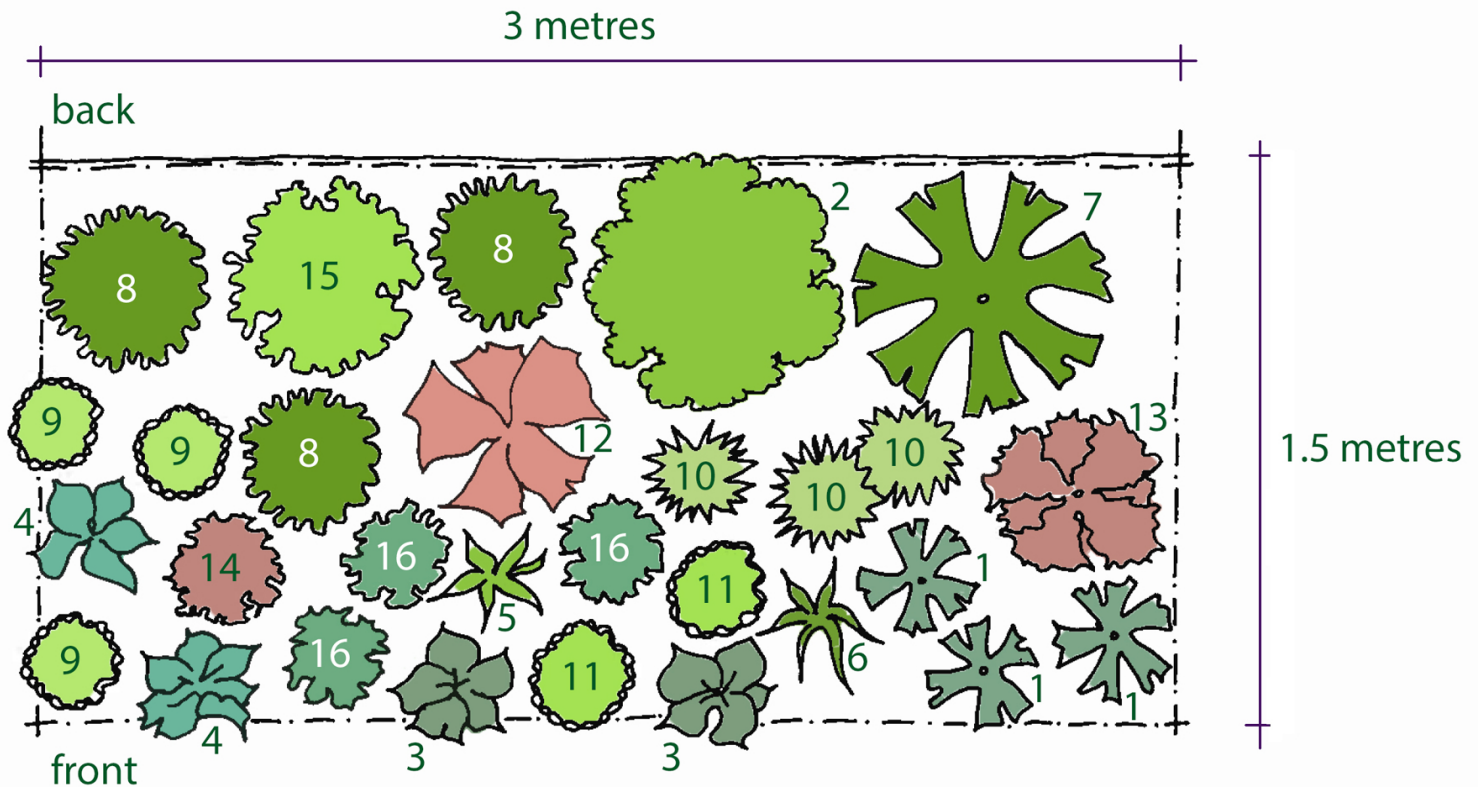


# Rosy's Planting Plan for a Border with Moisture Retentive Soil Sunny to Partially Shaded Site



## The Plant Key - with alternatives or suggestions for substitutes

1. Astilbe 'Hennie Graafland' (simplicifolia hybrid) Or Astilbe 'Fanal' (×\_arendsii\_)
2. Sanguisorba obtusa Or Sanguisorba hakusanensis 'Lilac Squirrel' Or other tall varieties.
3. Hosta 'Purple Heart' Or any Hosta variety
4. Inula hookeri Or try Hesperantha
5. Hemerocallis 'Irish Elf'
6. Iris 'White Swirl' Or Iris 'Silver Edge'
7. Ligularia 'The Rocket'
8. Lobelia x speciosa 'Pink Elephant' Or try Lobelia x speciosa 'Hadspen Purple'
9. Lychnis flos-cuculi 'White Robin' Or try Lythrum salicaria 'Feuerkerze' or Lythrum v. 'Dropmore Purple'
10. Primula florindae Or try Molinia
11. Primula japonica 'Miller's Crimson' Or any Primula japonica or P. beesiana
12. Rheum palmatum var. tanguticum
13. Rodgersia podophylla Or Rodgersia 'Irish Bronze'
14. Sanguisorba menziesii Or Sanguisorba officinalis 'Martin's Mulberry'
15. Cirsium rivulare 'Atropurpureum'
16. Trollius cultorum 'Lemon Queen' Or try any Trollius varieties

For Mail Order. Our mail order team is very small, so we're unable to advise you on bespoke design, the specific numbers of plants you'll need for borders which are bigger or smaller than the plans detail, or to complete quotes for online purchasing. We can only do this type of work if you visit the nursery. If you wish to purchase the plants online, use the links in the plans to find the plants.

We may not have all the plants listed on the plans for mail order delivery at any one time.

Our nursery shop often has alternatives and substitutes, but we can only advise and provide these if you visit us.